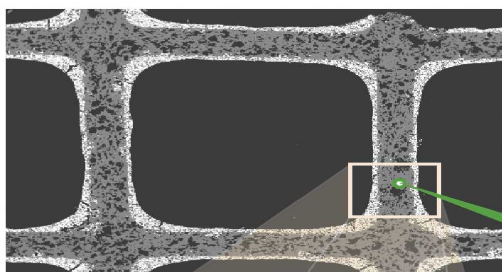


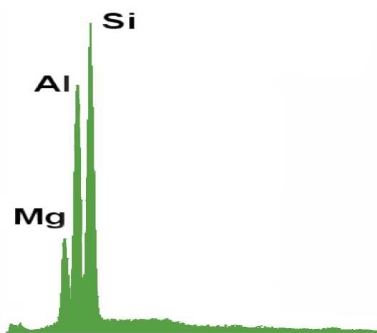
COMPOSITION OF CATALYST COATINGS

Detailed microanalytical study of virgin PGM-REE-coated ceramic substrate.

CERAMIC SUBSTRATE OF AUTO CONVERTER

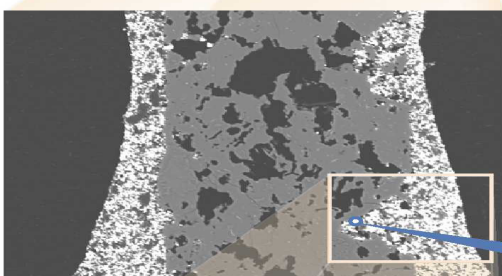


50µm
BEI PS12300-dt4-p#2

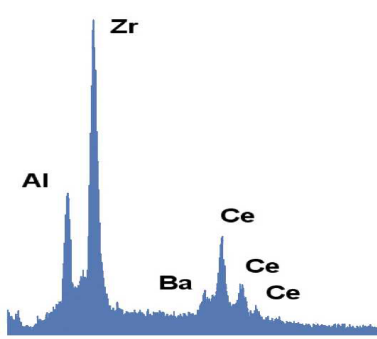


Si	29.44
Al	15.58
Mg	5.63
Zr	0.01
Ba	0.01
Ce	0.02
La	0.00
Pt	0.02
S	0.01

FIRST LAYER OF PGM-REE COATING

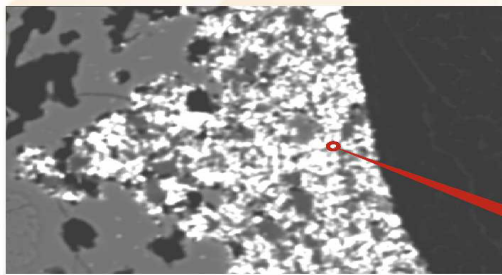


50µm
BEI PS12300-dt1-Pt#10

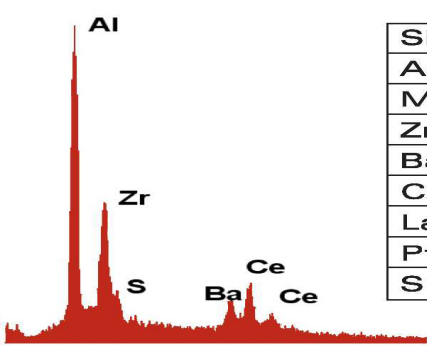


Si	0.13
Al	7.93
Mg	0.01
Zr	24.15
Ba	4.01
Ce	12.07
La	3.14
Pt	4.49
S	0.27

SECOND LAYER OF PGM-REE COATING



20µm
BEI PS12300-dt1 0-p#67



Si	0.44
Al	19.75
Mg	0.01
Zr	18.20
Ba	7.29
Ce	8.69
La	2.76
Pt	3.69
S	1.83

CONTACT INFORMATION

Email us at minerals@sgs.com
www.sgs.com/mining

WHEN YOU NEED TO BE SURE

